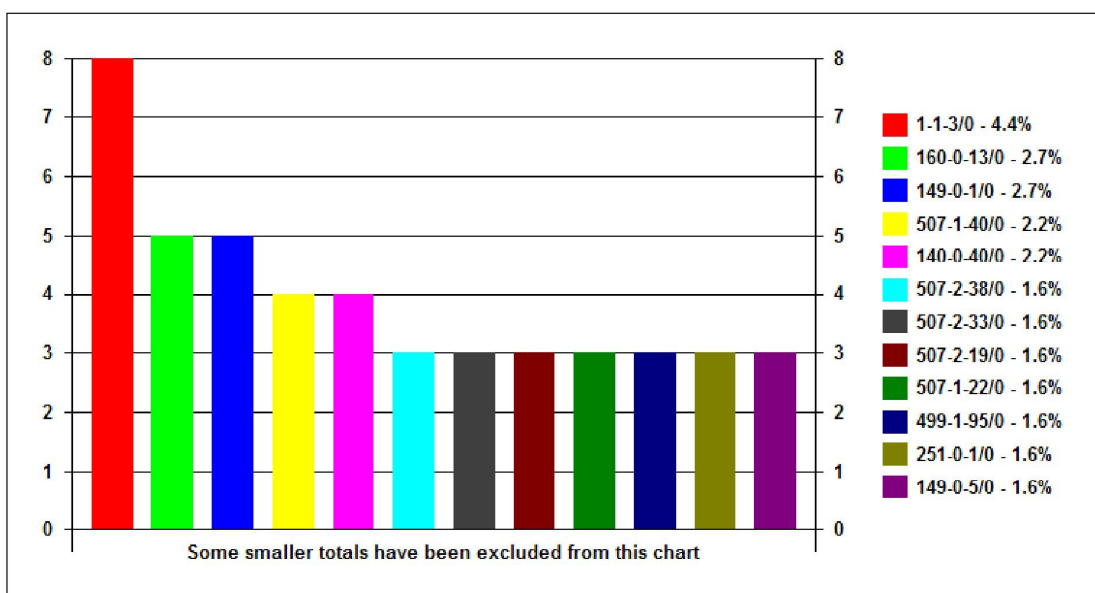


AMX1 Event Analysis

False Alarms March 2006



Reference	Event Type	Location/Description	Total	%age
1-1-3/0	FIRE	ACCESS CORRIDOR	8	4.4%
160-0-13/0	FIRE	CENTRAL WORKSHOP	5	2.7%
149-0-1/0	FIRE	CENTRAL STORES	5	2.7%
507-1-40/0	FIRE	DAY ROOM	4	2.2%
140-0-40/0	FIRE	STAIRCASE 3 EXIT	4	2.2%
507-2-38/0	FIRE	FREEZER ROOM	3	1.6%
507-2-33/0	FIRE	STAIRCASE 2 EXIT	2	1.6%

Drax's Connect AMX1 is a highly versatile critical event management system for the management and control of one or many alarm systems. AMX1 logs all of the events it receives into a massive history archive.

A comprehensive search tool is provided to enable the system owner or user to build reports tailored how they want. The search facilities allow the user to "home in" on periods of interest and they can further filter the data by event type and by many other parameters.

Facilities are provided for the AMX user to *classify* events and alarms. Using simple selection box alarms can be classified as *genuine*, *false alarm*, *weekly test*, etc. If false alarms are classified as *false* then the search tool can be used to build a report showing which inputs or devices are creating the problems.

In the example printout shown above the user searched for all alarms which had been tagged as false during a one month period. They then used the analysis tool to show which had occurred most frequently. It is apparent that a small number of inputs have had several alarms during this period, and the user now needs to investigate the reason for this. Similarly, the user can search for faults. Often it is found that the majority of faults in the connected systems are originating from a small number of inputs - and these need to be investigated. Using the system in this manner allows the system owner to focus on the areas of their connected systems that really need attention.